

O·P·I

GEL COLOR

FRENCH TIP

OPI GelColor is available in iconic pink & white OPI shades.

Ideal for gel polish enthusiasts who want long-lasting, quality wear, lasting durability, and high-gloss shine. The fast application and 30 second cure time makes OPI GelColor the system of choice for gel polish services.

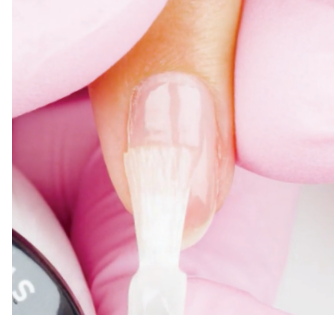
Prepare the nail following OPI GelColor Nail Prep Steps.

OPI PRODUCTS USED

- GelColor Stay Classic or Stay String Base Coat
- GelColor (Shade of Choice)
- OPI LED Light
- GelColor Stay Shiny Top Coat
- Expert Touch Nail Wipe
- N.A.S. 99 Cleansing Solution
- OPI ProSpa Nail & Cuticle Replenishing Oil
- GelColor Alpine Snow

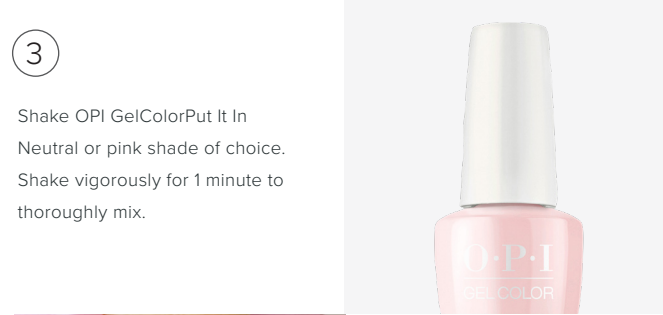
1

Assess client's nail type & lifestyle to determine if they are a Stay Classic or Stay Strong user.



2

To properly prepped nails, apply 1 thin coat of Stay Strong, leaving a tiny margin around the cuticle area. Cap the free edge. Cure 30 seconds in the OPI LED Light.



3

Shake OPI GelColor Put It In Neutral or pink shade of choice. Shake vigorously for 1 minute to thoroughly mix.



4

Apply 2 thin coats of Put It In Neutral or pink shade of choice. Cure each coat for 30 seconds in OPI LED Light. Apply a second thin coat down the center of the nail and then to each side, leaving a tiny margin around the cuticle. Cap the free edge. The second coat will provide true color and full coverage.

5

Remove gel residue with an Expert Touch Nail Wipe saturated with N.A.S. 99. This will allow you to create a crisp smile line.



6

Shake OPI GelColor Alpine Snow vigorously for 1 minute to thoroughly mix. Wipe excess product from the stem and brush when removing from the bottle.

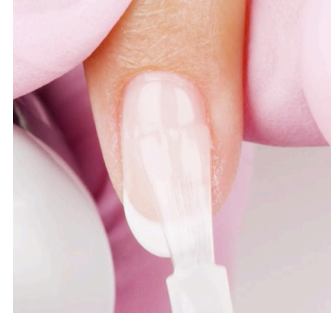


7

Apply a thin coat of OPI GelColor Alpine Snow to the tip of the nail in an arched smile line, Cap the free edge. Detail the smile line using an Artist Series Brush dampened with N.A.S. 99. Cure 30 seconds in the OPI LED Light.

8

Shake OPI GelColor Stay Shiny Top Coat vigorously for 1 minute to thoroughly mix.

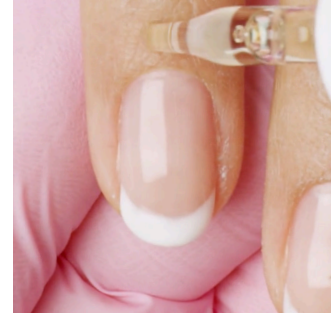


9

Apply a thin coat to the nail making sure not to flood the cuticle area. Cap the free edges to seal in French design. Cure 30 seconds in the OPI LED Light.

10

Remove gel residue with an Expert Touch nail Wipe saturated with N.A.S.99.

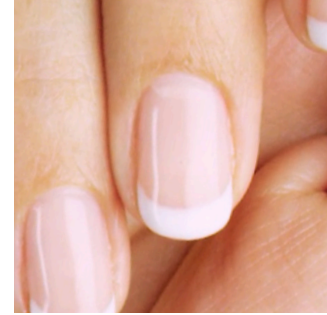


11

Then add a drop of ProSpa Nail & Cuticle Oil and massage into cuticles.

12

FINISHED LOOK.



Visit [OPI.COM](https://www.opi.com) to find more tips & tutorials featuring GelColor