

O·P·I

GEL COLOR

REMOVAL

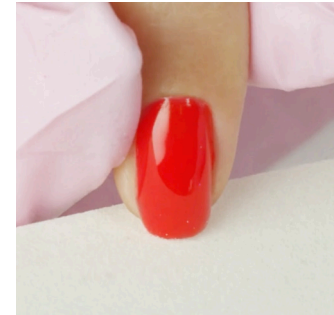
Following the proper removal of OPI GelColor is important to avoid damaging the natural nail.

OPI PRODUCTS USED

- Swiss Blue Liquid Hand Soap
- Swiss Hand Gaurd Antiseptic Gel
- Expert Touch Nail Wipe
- N.A.S. 99 Nail Cleansing Solution
- Expert Touch Lacquer Remover
- Expert Touch Removal Wrap
- Expert Touch Hand Mitt
- Reusable Cuticle Stick
- EDGE White 240 File

1

Both client and technician wash hands with Swiss Blue Soap. Sanitize hands with Swiss Hand Guard Gel.



2

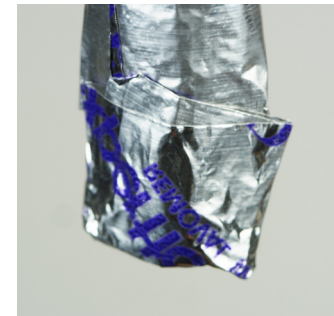
Break the seal by filing the free edge and sidewalls with an EDGE 240 File.

⊕ **ProTip:** For faster removal, break the seal & file off the top coat. Do not file through to the natural nail. Make sure there is always color showing.

3

Fully saturate the pad of the Removal Wrap with Lacquer Remover.

⊕ **ProTip:** Fold the top of the removal wrap inward for a more comfortable soak-off experience meanwhile preventing remover liquid from evaporating.



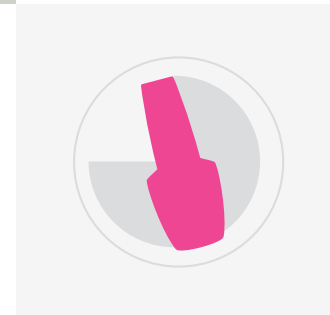
4

Wrap each finger securely, making sure the pad is placed on top of the nail.

⊕ **ProTip:** For faster removal or clients with colder temperture hands, place a Hand Mitt over each hand and cover with a towel for added heat during removal.

5

STAY CLASSIC: Wait 15 Minutes
STAY STRONG: Wait 18 Minutes
REMOVED SHINE: Reduce 5 minutes from wait time.

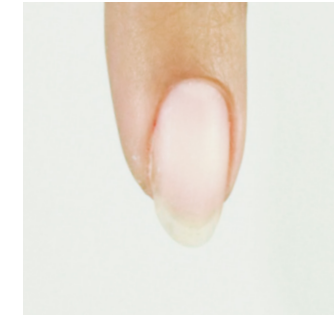


6

Use a Reuseable Cuticle Stick to gently push off the lifted product from the nail. Push from the cuticle area to the free edge to avoid nail damage. If any GelColor remains, do not scrape the nail, simply rewrap and soak an additional 2-5 minutes.

7

Cleanse nails with a Nail Wipe saturated with N.A.S. 99.



8

COMPLETE REMOVAL.

Visit [OPI.COM](https://www.opi.com) to find more tips & tutorials featuring GelColor